

When your programmer is bored with nothing to do: -

What would be nice is a copy and paste option.

Let's say I have built a bridge.



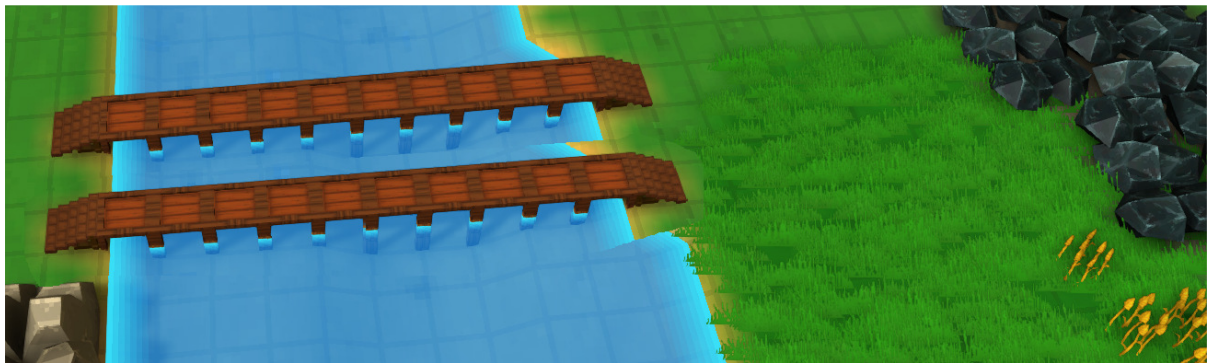
And there is too much traffic on the bridge (yes I use carts for everything)

So I want to build another...

Would be nice if I could (say) click Ctrl and click drag to highlight the bridge.



And Ctrl C and then find a new place and Ctrl V



Challenges: -

- 1) Will need to check if I have enough resources
- 2) The terrain is not going to be the same (maybe when you copy, it copies the terrain layout as well, and factors in the cost of re-arranging the terrain)